

PHOTO Suite

An Expert System For All

Automatic digital image correction software that "Takes Graphic arts to the next level"

Original image



Photo-D corrected image



- Simple and Easy to use.
- High productivity - superior quality.
- Easily Integrated and customizable.
- Good images remain untouched!
- Optional: Manual refine/correction.

IES - Intelligent Expert System:

Automatic: Toning, Exposure, White balance, Contrast, Color, Sharp (adaptive).

Scaling:

- Cropping, Smart Scaling (digital enlargement)

ICC support.
RAW images.



www.klearvision.com



High Productivity, one click correction.

The **Photo-D PRO** product family gives digital photography professionals, designers, and prepress professionals a sophisticated, high volume, automatic digital image correction solution that speeds up processing and improves quality dramatically.

Whether you're a digital imaging professional, enthusiast, or novice; you'll always get high-quality results by using any of the following Photo-D products:

- Photo-D PRO II** - for Graphic Arts professionals and large PhotoLab/Minilabs.
- Photo-D PRO I** - for Photographers, Designers and Prosumers.
- Photo-D RAW** - for RAW data images.
- Photo-D OEM** - customized solution.

PHOTO D Technology:

Analyzes each image using advanced imaging algorithms, and automatically corrects images using artificial intelligence.

Hotfolder provides full automation from the digital front end and throughout the workflow.

System requirements:

- Windows 2000/XP
- At least 256MB RAM memory
- Free hard disc space of 50MB

PHOTO D PRO I

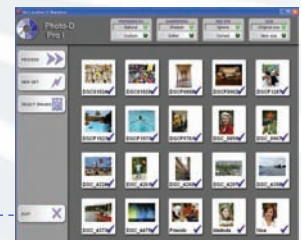


PHOTO D PRO II (HotFolders method)

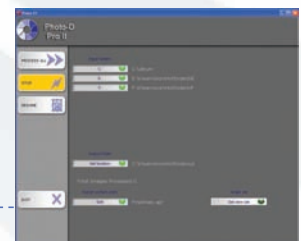


PHOTO D Optional: Confirmation and Manual



Contact information: